

MURO

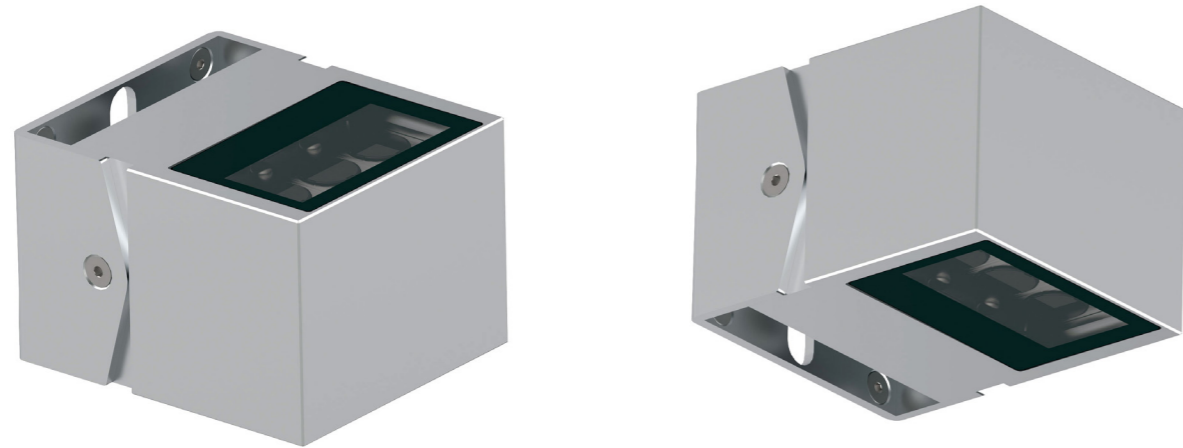
Applique murale orientable
Adjustable wall fixture



Alu
Alu



APPLIQUES



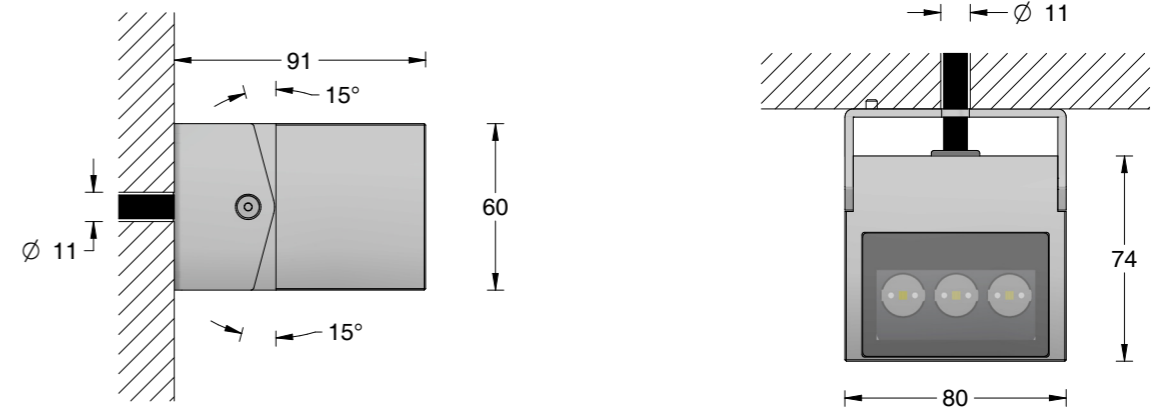
	1 DIRECTION			2 DIRECTIONS		
Source / Source	3 LED 3-SDCM - L90B10@100.000hr					
T° de couleur / Color T°	Monochrome					
Flux produit / Product flux¹	520lm	384lm	1000lm	750lm		
Efficacité / Efficacy	- 124lm/W	- 110lm/W	- 93lm/W	- 119lm/W	- 106lm/W	- 103lm/W
Optique / Optic²	12° / 24° / 30° / 50° / WW(12°x62°) / WW(24°x62°) / ASY_232					
Orientable / Adjustable	+/- 15°					
Puissance / Power	4.8W_max	5.4W_max	4.8W_max	9.6W_max	10.8W_max	8.4W_max
Alimentation / Power supply	500mA_max	12-24VDC	230VAC	500mA_max	12-24VDC	230VAC
Classe énergie / Energy class	D	E	F	E	E	E
Pilotage / Control³	On-Off / 1-10V (Déporté / Remote) / DALI (Déporté / Remote)					
Câblage / Cables⁴	1ml standard - 2x0.5mm ² noir (500mA/12-24VDC) - 3x0.75mm ² noir (230VAC)					
Options / Options						

¹ 3000K-12° en sortie produit / 3000K-12° at product output

² Effets lumineux ASY_232 visibles page 273 / Visible light effects ASY_232 on page 273

³ A commander séparément selon driver / To order separately with adequate driver

⁴ Certifié usage extérieur / Certified for outdoor use



- Applique discrète et ultra-compacte / Discreet and ultra compact wall fixture
- Optique Asymétrique idéale pour cheminement / Asymmetrical optics ideal for pathways
- Divers effets lumineux sur mur (1 ou 2 directions) / Various light effects on wall (1 or 2 directions)

MURO



ALUMINIUM ANODISÉ / Anodized Aluminium  1 direction

T° couleur Color T°	Optique Optic	Flux* Flux*	Puissance** Power**	500mA	Flux* Flux*	Puissance** Power**	24VDC	Flux* Flux*	Puissance** Power**	230VAC
2700K	NSP (12°)	473lm	4.8W	A31.213.003.0	473lm	5.4W	A31.213.004.0	349lm	4.8W	A31.213.005.0
2700K	SP (24°)	470lm	4.8W	A31.313.003.0	470lm	5.4W	A31.313.004.0	346lm	4.8W	A31.313.005.0
2700K	FL (30°)	449lm	4.8W	A31.413.003.0	449lm	5.4W	A31.413.004.0	330lm	4.8W	A31.413.005.0
2700K	WFL (50°)	408lm	4.8W	A31.513.003.0	408lm	5.4W	A31.513.004.0	300lm	4.8W	A31.513.005.0
2700K	ASY_232	375lm	4.8W	A31.K13.003.0	375lm	5.4W	A31.K13.004.0	270lm	4.8W	A31.K13.005.0
2700K	WW_NSP (12°x62°)	421lm	4.8W	A31.813.003.0	421lm	5.4W	A31.813.004.0	310lm	4.8W	A31.813.005.0
2700K	WW_SP (24°x62°)	418lm	4.8W	A31.913.003.0	418lm	5.4W	A31.913.004.0	307lm	4.8W	A31.913.005.0
3000K	NSP (12°)	520lm	4.8W	A31.213.000.0	520lm	5.4W	A31.213.001.0	384lm	4.8W	A31.213.002.0
3000K	SP (24°)	517lm	4.8W	A31.313.000.0	517lm	5.4W	A31.313.001.0	381lm	4.8W	A31.313.002.0
3000K	FL (30°)	494lm	4.8W	A31.413.000.0	494lm	5.4W	A31.413.001.0	363lm	4.8W	A31.413.002.0
3000K	WFL (50°)	449lm	4.8W	A31.513.000.0	449lm	5.4W	A31.513.001.0	330lm	4.8W	A31.513.002.0
3000K	ASY_232	400lm	4.8W	A31.K13.000.0	400lm	5.4W	A31.K13.001.0	290lm	4.8W	A31.K13.002.0
3000K	WW_NSP (12°x62°)	463lm	4.8W	A31.813.000.0	463lm	5.4W	A31.813.001.0	341lm	4.8W	A31.813.002.0
3000K	WW_SP (24°x62°)	460lm	4.8W	A31.913.000.0	460lm	5.4W	A31.913.001.0	338lm	4.8W	A31.913.002.0
4000K	NSP (12°)	530lm	4.8W	A31.223.000.0	530lm	5.4W	A31.223.001.0	391lm	4.8W	A31.223.002.0
4000K	SP (24°)	527lm	4.8W	A31.323.000.0	527lm	5.4W	A31.323.001.0	388lm	4.8W	A31.323.002.0
4000K	FL (30°)	503lm	4.8W	A31.423.000.0	503lm	5.4W	A31.423.001.0	370lm	4.8W	A31.423.002.0
4000K	WFL (50°)	457lm	4.8W	A31.523.000.0	457lm	5.4W	A31.523.001.0	336lm	4.8W	A31.523.002.0
4000K	ASY_232	440lm	4.8W	A31.K23.000.0	440lm	5.4W	A31.K23.001.0	320lm	4.8W	A31.K23.002.0
4000K	WW_NSP (12°x62°)	472lm	4.8W	A31.823.000.0	472lm	5.4W	A31.823.001.0	347lm	4.8W	A31.823.002.0
4000K	WW_SP (24°x62°)	469lm	4.8W	A31.923.000.0	469lm	5.4W	A31.923.001.0	344lm	4.8W	A31.923.002.0

OPTIONS PRODUIT / Luminaire options	Référence
T° couleur LED / LED colour temperature	Sur demande / On request
Câble supplémentaire / Additional cable	T00.000.007.0
RAL spécial / Special RAL	Sur demande / On request
Connecteur IP68 / IP68 connector	T00.000.078.0
Kit connexion IP68 / IP68 connection kit	T00.000.000.0

*Flux en sortie produit / Net luminaire output
**Puissance max / Maximum power

Dimensions câbles / Cable dimensions	
500mA/24VDC	2 x 0.5 mm2 - Ø5.8mm
230VAC	3 x 1 mm2 - Ø8.9mm

ALUMINIUM ANODISÉ / Anodized Aluminium  2 directions

T° couleur Color T°	Optique Optic	Flux* Flux*	Puissance** Power**	500mA	Flux* Flux*	Puissance** Power**	24VDC	Flux* Flux*	Puissance** Power**	230VAC
2700K	NSP (12°)	946lm	9.6W	A41.214.003.0	946lm	10.8W	A41.214.004.0	698lm	8.4W	A41.214.005.0
2700K	SP (24°)	940lm	9.6W	A41.314.003.0	940lm	10.8W	A41.314.004.0	692lm	8.4W	A41.314.005.0
2700K	FL (30°)	898lm	9.6W	A41.414.003.0	898lm	10.8W	A41.414.004.0	660lm	8.4W	A41.414.005.0
2700K	WFL (50°)	816lm	9.6W	A41.514.003.0	816lm	10.8W	A41.514.004.0	600lm	8.4W	A41.514.005.0
2700K	ASY_232	750lm	9.6W	A41.K14.003.0	750lm	10.8W	A41.K14.004.0	540lm	8.4W	A41.K14.005.0
2700K	WW_NSP (12°x62°)	842lm	9.6W	A41.814.003.0	842lm	10.8W	A41.814.004.0	620lm	8.4W	A41.814.005.0
2700K	WW_SP (24°x62°)	836lm	9.6W	A41.914.003.0	836lm	10.8W	A41.914.004.0	614lm	8.4W	A41.914.005.0
3000K	NSP (12°)	1040lm	9.6W	A41.214.000.0	1040lm	10.8W	A41.214.001.0	768lm	8.4W	A41.214.002.0
3000K	SP (24°)	1034lm	9.6W	A41.314.000.0	1034lm	10.8W	A41.314.001.0	762lm	8.4W	A41.314.002.0
3000K	FL (30°)	988lm	9.6W	A41.414.000.0	988lm	10.8W	A41.414.001.0	726lm	8.4W	A41.414.002.0
3000K	WFL (50°)	898lm	9.6W	A41.514.000.0	898lm	10.8W	A41.514.001.0	660lm	8.4W	A41.514.002.0
3000K	ASY_232	800lm	9.6W	A41.K14.000.0	800lm	10.8W	A41.K14.001.0	580lm	8.4W	A41.K14.002.0
3000K	WW_NSP (12°x62°)	926lm	9.6W	A41.814.000.0	926lm	10.8W	A41.814.001.0	682lm	8.4W	A41.814.002.0
3000K	WW_SP (24°x62°)	920lm	9.6W	A41.914.000.0	920lm	10.8W	A41.914.001.0	676lm	8.4W	A41.914.002.0
4000K	NSP (12°)	1060lm	9.6W	A41.224.000.0	1060lm	10.8W	A41.224.001.0	782lm	8.4W	A41.224.002.0
4000K	SP (24°)	1054lm	9.6W	A41.324.000.0	1054lm	10.8W	A41.324.001.0	776lm	8.4W	A41.324.002.0
4000K	FL (30°)	1006lm	9.6W	A41.424.000.0	1006lm	10.8W	A41.424.001.0	740lm	8.4W	A41.424.002.0
4000K	WFL (50°)	914lm	9.6W	A41.524.000.0	914lm	10.8W	A41.524.001.0	672lm	8.4W	A41.524.002.0
4000K	ASY_232	880lm	9.6W	A41.K24.000.0	880lm	10.8W	A41.K24.001.0	640lm	8.4W	A41.K24.002.0
4000K	WW_NSP (12°x62°)	944lm	9.6W	A41.824.000.0	944lm	10.8W	A41.824.001.0	694lm	8.4W	A41.824.002.0
4000K	WW_SP (24°x62°)	938lm	9.6W	A41.924.000.0	938lm	10.8W	A41.924.001.0	688lm	8.4W	A41.924.002.0

OPTIONS PRODUIT / Luminaire options	Référence
T° couleur LED / LED colour temperature	Sur demande / On request
Câble supplémentaire / Additional cable	T00.000.007.0
RAL spécial / Special RAL	Sur demande / On request
Connecteur IP68 / IP68 connector	T00.000.078.0
Kit connexion IP68 / IP68 connection kit	T00.000.000.0

*Flux en sortie produit / Net luminaire output
**Puissance max / Maximum power

Dimensions câbles / Cable dimensions	
500mA/24VDC	2 x 0.5 mm2 - Ø5.8mm
230VAC	3 x 1 mm2 - Ø8.9mm