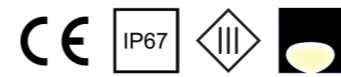


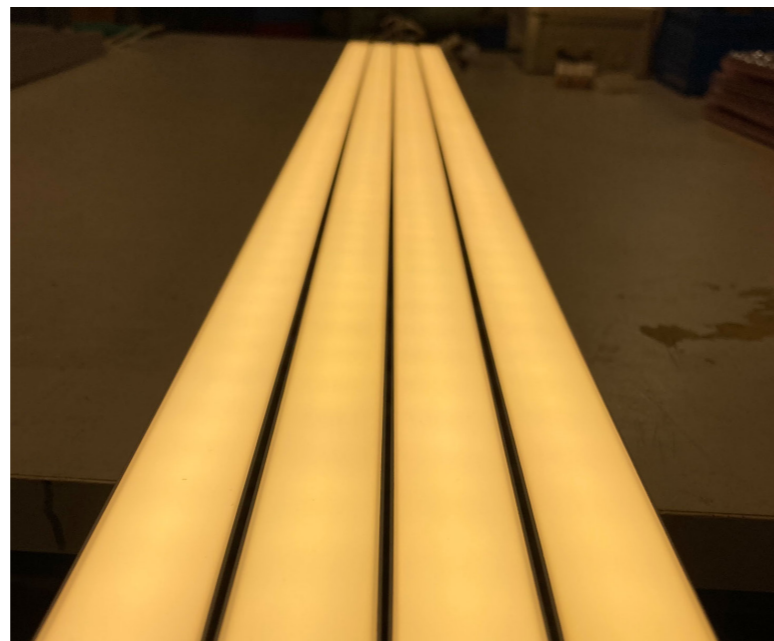
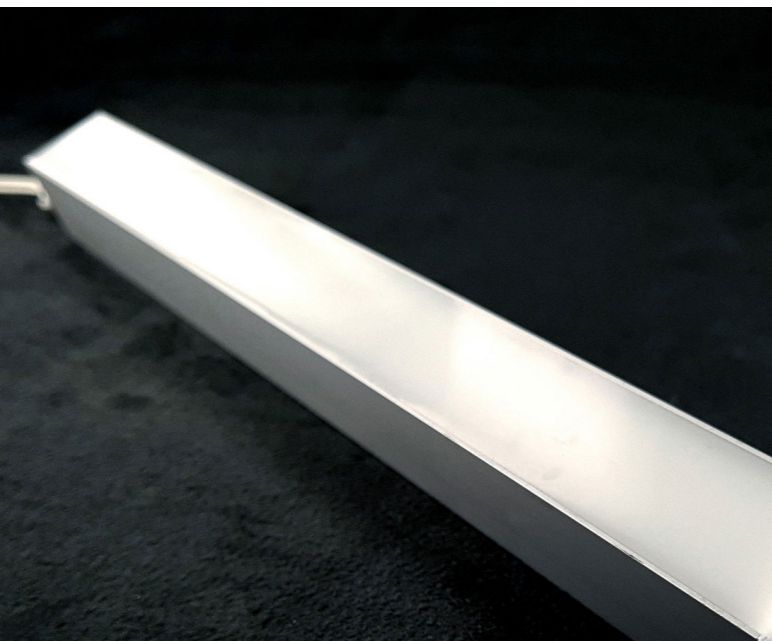
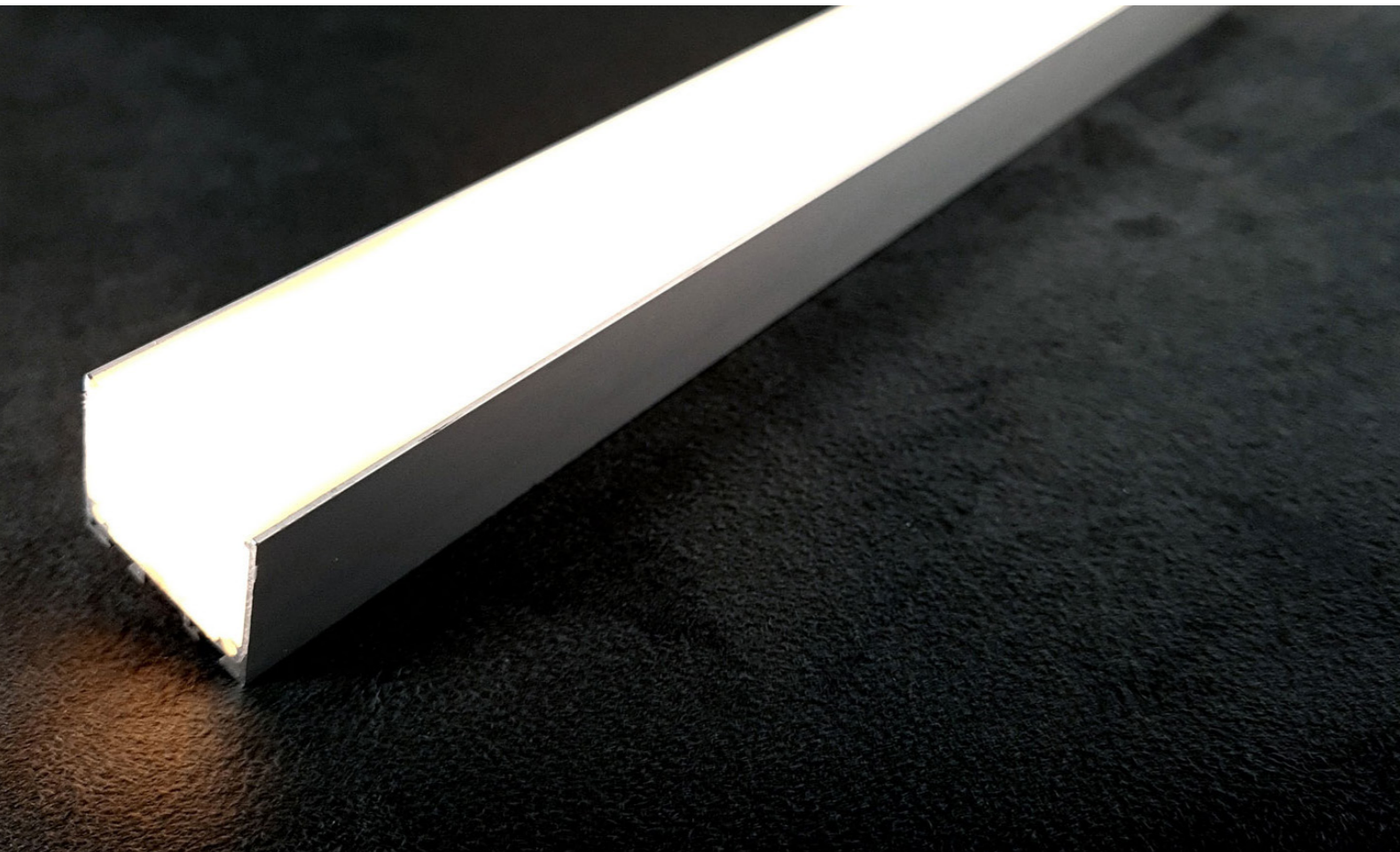
LTX-LINE


Polyuréthane / alu
Polyurethane / alu



Grand linéaire LED rigide et modulable pour usage extérieur

Big modular linear LED line for outdoor use

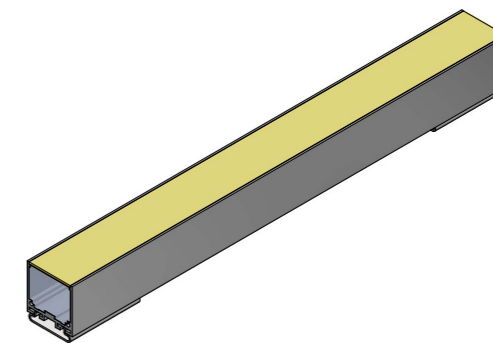
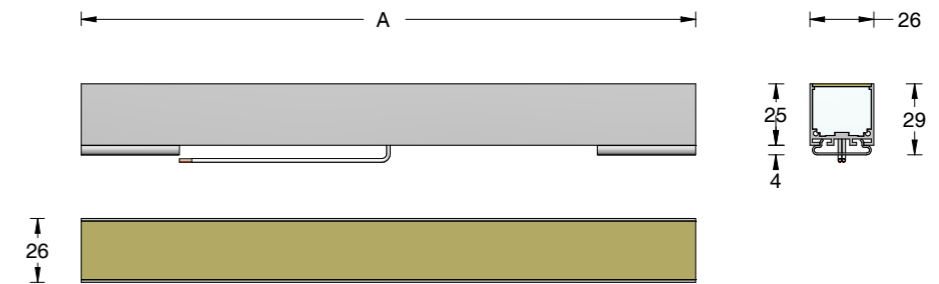


| | |
|--|--|
| Source / Source | 3 SDCM - L70B50 @ 50.000hr |
| T° de couleur / Color T° | Monochrome / RGBW |
| Flux produit / Product flux ¹ | 70lm/m --> 528lm/m |
| Efficacité / Efficacy | -29lm/W |
| Optique / Optic | 112° |
| Orientable / Adjustable | Non / No |
| Puissance / Power | 2.4W/ml_max --> 18.2W/ml_max |
| Alimentation / Power supply | 24VDC |
| Classe énergie / Energy class | G |
| Pilotage / Control ² | On-Off / 1-10V / DALI / DMX (Déporté / Remote) |
| Câblage / Cables ³ | 150mm - 2000mm |
| Longueur (A) / Length (A) | Sur demande / On request |
| Options / Options |  LED COLOR CUSTOM |

¹ 3000K-IRC>80 en sortie produit / 3000K-CRI>80 at product output

² A commander séparément selon driver / To order separately with adequate driver

³ Certifié usage extérieur / Certified for outdoor use



- Grand linéaire rigide puissant et uniforme / Big, rigid, powerful and «dotless» linear
- Lignes lumineuses continues / Continuous light lines
- Idéal pour lumière directe / Ideal for direct lighting

LTX-LINE



Polyuréthane & aluminium / Polyurethane & aluminium



Pour toutes références de LTX-LINE, veuillez nous contacter par:

E-mail : commercial@lumteam.com

Téléphone : +33 (0)4 97 23 96 63

Message : [cliquez ici](#)

For LTX-LINE references, please contact us by:

E-mail : commercial@lumteam.com

Telephone : +33 (0)4 97 23 96 63

Message : [clik here](#)